

## CHEVROLET LUMINA

Since Chevy introduced the new Lumina body style to the racetrack, fans are quickly re-learning the phrase, "What wins on Sunday, sells on Monday." For buyers looking for a true mid-size performance car, the Z-34 package is gaining popularity with the public in a hurry. For '92, the multi-port, fuel-injected DOHC 3.4-liter V6 powerplant and FE-3 suspension package are complemented with a new four-wheel anti-lock brake system and 16-inch aluminum wheels.



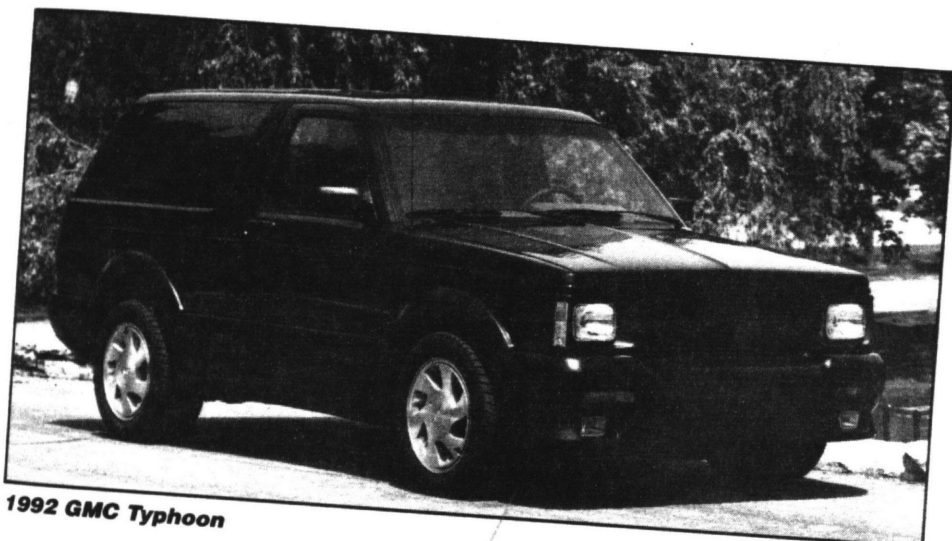
1992 Chevrolet Lumina Z34 Coupe

## GMC CREW-CAB

Hey gang, the four-door crew-cab Dualie is back! It's been 19 long years since GM introduced the first-generation models and four years since GMC brought out the Sierra series pickups, but who's counting? With its 190 horses and 300 foot-pounds of torque, the fuel-injected 7.4-liter big block (the 504 Rat is soon to follow) and 4L80E (goodbye 700R-4!) is strong enough to tow a 45-foot fifth-wheel race trailer and actually provide some measure of economy. The best news is that six mature adults can actually fit inside, just like the good old days!



1992 GMC Sierra Crew Cab



1992 GMC Typhoon

## GMC TYPHOON

It's hard to believe that a mini pickup truck could ever embarrass any V8 car, let alone Chevy's ZR-1 Corvette. But the fact remains that the Sylclone is the quickest production truck on the planet! For '92, GMC takes the program one step further with the Typhoon (obviously, someone in marketing used to be a weatherman). Acceleration junkies can now have the best of both worlds, with four seats and a full roof line. Sharing identical powertrain, suspension, exterior and interior amenities, this hybrid Jimmy two-door is virtually a carbon copy of the Syclone. The turbocharged/intercooled port-fuel-injected 4.3 V6 produces 280 horsepower and 350 foot-pounds of torque! Featuring the 4L60 four-speed automatic transmission and full-time all-wheel drive with four-wheel anti-lock disc brakes, the 13-second/140-mph Typhoon offers gobs of performance without compromising comfort and utility values.



1992 Chevrolet Camaro RS Convertible

all models, coupes and convertibles in both the standard RS and Z/28 trim. Buyers can pick from red, white or black paint schemes. Short of the birthday celebration cars, Camaro enthusiasts don't have much else to look forward to in '92.