

1 9 9 1

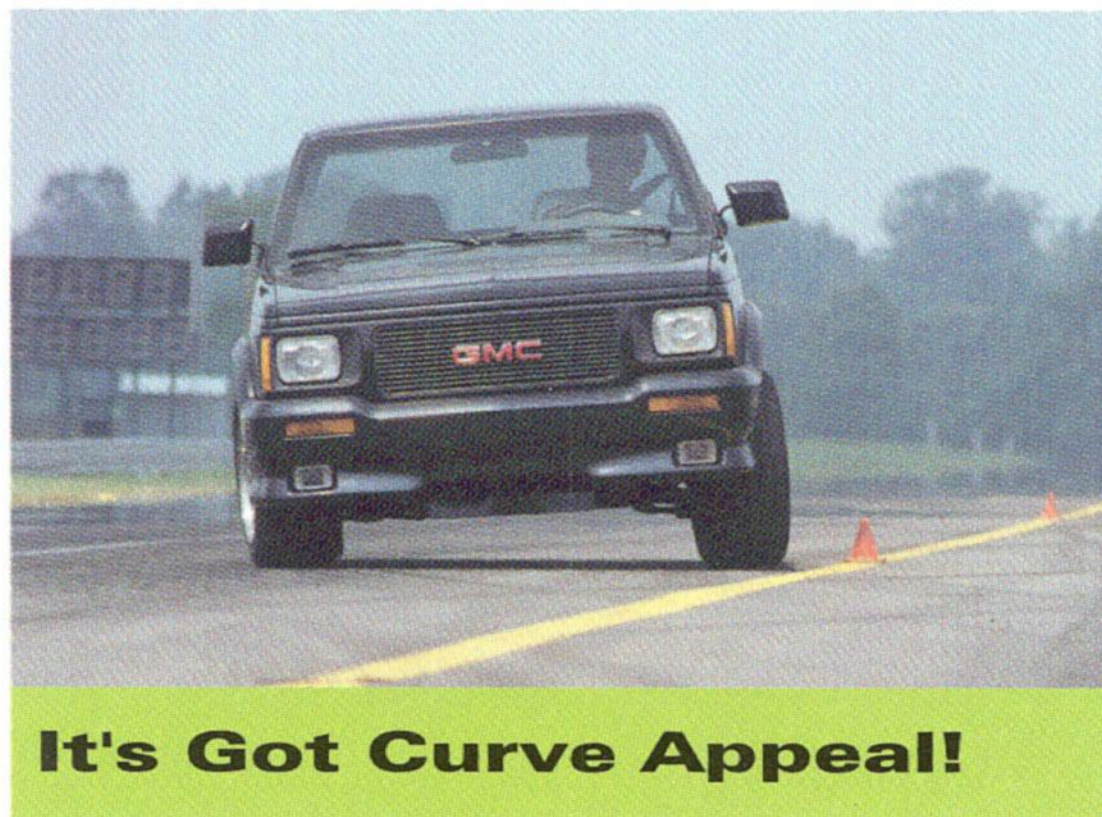
SKYCLONE

GMCTRUCK
It's not just a truck anymore.®

BORN FOR PERFORMANCE

GMC Truck introduces today's technological brainstorm, the new SYCLONE. This truck moves in the spirit of the muscle cars of the 1960's but with the technology of the '90's! It'll go from 0-60 mph in 4.6 seconds and loves every second of it. Recapture your youth with the new SYCLONE, made in the USA, made for the 90's and made for you!

SYCLONE is the performance enthusiast's dream come true. **SYCLONE's** high technology shows in the quarter mile time of 13.4 seconds with its high performance 4.3L (262 CID) turbo-charged/intercooled Vortec V6 with multi-port fuel injection. It pours a whirlwind of 280 beautiful net horsepower through a special sport calibrated smooth shifting four-speed automatic transmission with a torque converter clutch with lock-up overdrive. Power is then transferred to the Full Time on road All Wheel Drive. Here's the best part...its affordable, it's less than one-half the price of a Porsche Carrera II. And if we haven't got your attention yet read what the Sport Truck and Automotive Enthusiast Press have to say about **Syclone**.



It's Got Curve Appeal!

"With the Syclone, GMC has taken the most significant step of any manufacturer on transforming the pickup into a true sport truck...The Syclone may be the most significant performance vehicle built in the last 20 years...(GMC's) assessment of performance minded buyers is dead-on target...always give the maximum bang for the buck and you've got a friend (customer) for life!"

Hot Rod Magazine, October, 1990

"Ask people to name the fastest quarter-mile factory produced machine on this continent in the last 10 years? We're here to tell you that the '91 GMC Syclone holds the title hands down. There are no other contenders."

Car Craft Magazine, October, 1990

"GMC's Syclone is more than a repackaged S-15 pickup...it's the performance enthusiast's dream come true."

Popular Hot Rodding, October, 1990

"There are no disappointments. It's safe to say the Syclone is the most revolutionary truck produced since the '57 Chevy Cameo."

Hot Truck Magazine, October, 1990

"So, is the Syclone the ultimate production pickup?...It's the closest thing we have right now."

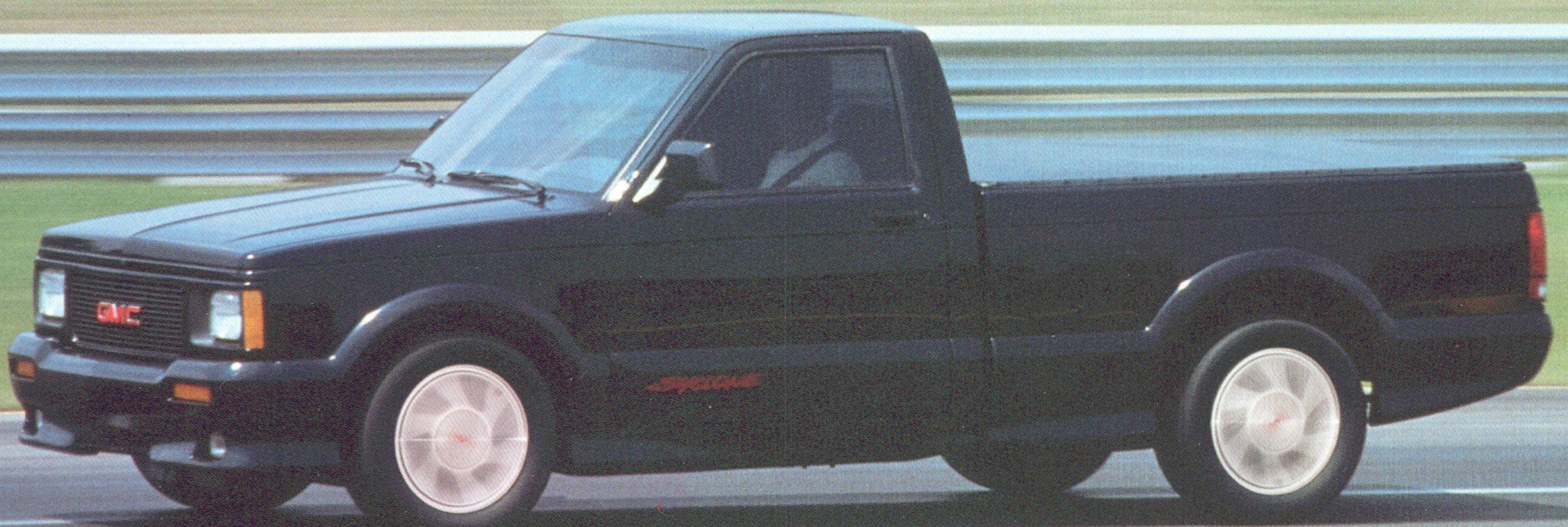
Sport Truck, October, 1990

"Performance is no drag for Syclone, which clocked 0-60 in (4.6) seconds and took quarter mile in a best-run (13.4) at (103) mph."

Autoweek, October, 1990

"Step into fantasyland for a moment. Imagine a machine that can accelerate from 0 to 30 mph quicker than a Porsche 959. Imagine it running the quarter-mile in (13.4) seconds at (103) mph. Imagine it with full-time four-wheel drive and standard anti-lock brakes. And, just to make things really interesting, imagine that it looks like a pickup truck."

Car & Driver, November, 1990



FASTEST Production Pickup in America!

CONTROL COCKPIT

Varoommm For Two!



Think of Syclone as a friendly street machine that is not temperamental. It starts easily in hot or cold weather. Drive it like your regular pickup or automobile. Then on any day at the track you can flex

Instruments: The leather wrapped steering wheel design configuration permits a full view of the high-mount gage instrument panel. Gages are easy to read and understand. They consist of a Fuel,

Temperature, Oil Pressure, Voltmeter, Speedometer, Tachometer and Turbo Boost (inlet manifold pressure). Looking up provides a wide view of what's directly up front through the 1138.5 sq in windshield. Other Important Standard Driving Aids Include: Driving Lights; Tilt Steering Wheel;

Multi-function Switch with Electronic Cruise Control; Windshield Washers and Intermittent Wipers; Utility Shelf for Personal Items; and a Glove Box With Lock. **Driving Environment:** Large standard fresh air heater and air conditioner provide temperatures at the driver's

selection. Defogger outlets keep windshield and side windows clear. Power Windows and Door Lock add to driver convenience. Inside air is exhausted through louvers in both doors keeping the air moving.

Interior: Two large back hugging bucket seats in black cloth are trimmed with a bright red piping and a red embroidered "Syclone" is on each seat back. Automatic inertia locks control forward travel of seat backs. Individual lumbar support inflation controls are provided. Floors, cowl areas, inside back of cab and door kick panels are carpeted. Shoulder and lap safety belts are provided for each passenger location. A console with shift lever for the 4-speed automatic transmission also provides storage space and holders for two cups. Additional storage is found in each door pocket. Doors are tastefully tailored with fabric and vinyl to complement the interior. An overhead grab handle is provided for the passenger seat location.



the muscles of Syclone in individual time competition. Here's the place for superior performance. Go from 0 to 30 MPH in (1.4) seconds or from 0 to 60 MPH in (4.6) seconds. Further acceleration places Syclone at the quarter mile in (13.4) seconds.

RADICAL PERFORMANCE... FASTEST ACCELERATING VEHICLE ON THE SHOWROOM FLOOR

- ☐ **DRIVE TRAIN:** 4.3 Liter (262 CID) Turbocharged/ Intercooled Vortec V6 with Port Fuel Injection. 280 HP @ 4400 RPM, 350 lb-ft Torque @ 3600 RPM (SAE net).
- ☐ **FULL TIME ALL-WHEEL DRIVE** is through a 4-Speed Overdrive Automatic Transmission with Lock-up Torque Converter in the Overdrive Gear.
- ☐ **TRANSFER CASE** splits the Torque approximately 35% to the Front Axle and the balance goes to the Limited-Slip Rear Differential.
- ☐ **THE FRONT AXLE DRIVE SHAFT** is fitted with Cross Groove and Double Cardan Joints.
- ☐ **CERTIFICATION:** The Syclone is EPA-certified for sale in all fifty states.
- ☐ **ENGINE COOLING:** Heavy-Duty Radiator
- ☐ **TURBOCHARGER COOLING:** By Intercooler (water type) Heat Exchanger is mounted below the radiator.
- ☐ **ENGINE AND TRANSMISSION OIL COOLING:** By Oil Cooler Inside the Radiator
- ☐ **TUNED FRONT SUSPENSION:** Independent Torsion Bars with Stabilizer Bar and two Bilstein Gas Shock Absorbers and Sport Calibration for Low-Ride Height and Ease of Handling.
- ☐ **POWER STEERING:** Variable Ratio
- ☐ **REAR SUSPENSION:** Solid Axle with Semi-Elliptic 2-Stage Leaf Springs and Two Bilstein Gas Shock Absorbers and Sport Calibration for Low-Ride Height and Ease of Handling
- ☐ **REAR DIFFERENTIAL:** 3.42 to 1 Limited Slip
- ☐ **BRAKES:** Four-Wheel Anti-Lock System. Front Disc and Rear Drum Type
- ☐ **WHEELS:** Turbine Styled 8x16 inch Western Aluminum
- ☐ **TIRES:** Special Firestone Firehawk All Season High Performance Type 245/50VR-16 (Speed Rated)
- ☐ **PAYLOAD:** 500 lbs
- ☐ **EXTERIOR:** Aerodynamically tested to evaluate the Lower Stance, Wider Track Dimensions and the Urethane Injection Molded Panels. Aerodynamic drag is reduced.
- ☐ **COLOR:** Black/Mat Black
- ☐ **FUEL TANK:** 20 gallons (US) Fuel Tank
- ☐ **BATTERY CCA:** Freedom, 630
- ☐ **GENERATOR:** 85 Amps
- ☐ **TONNEAU COVER:** Standard for Pickup Box

LOW MAINTENANCE

The technology that goes into Syclone has contributed in many ways to reducing the time and effort required for routine service and maintenance. Consider these advanced features: ☐ Delco Freedom II+ battery never needs refilling with water and has a built-in test hydrometer ☐ Integral solid-state voltage regulator is built into the Delcotron generator ☐ Starter solenoid is integral, providing positive starter engagement ☐ Large fuse block has tweezer-type fuse remover for easy serviceability ☐ Engine coolant recovery reservoir collects hot overflow coolant and returns it to radiator automatically when it cools ☐ See-through reservoirs for quick checks of engine coolant, windshield washer fluid and brake fluid ☐ No adjustments for idle speed or idle air-fuel mixture; an on-board computer helps tune the engine as you drive ☐ Audible wear sensors for front disc brake pads for early warning of brake wear ☐ Front and rear brake designs include a self-adjusting feature, and brakes are the anti-lock type ☐ Single-belt engine accessory drive with automatic belt tensioner.

1991 GMC TRUCK SAFETY FEATURES

OCCUPANT PROTECTION:

- ☐ Manual lap/shoulder safety belts ☐ Energy absorbing steering column ☐ Energy absorbing instrument panel
- ☐ Interlocking door latches ☐ Inertia-locking, folding front seat backs ☐ Safety armrests ☐ Break-away inside rearview mirror ☐ Security door locks and door retention components.

ACCIDENT AVOIDANCE:

- ☐ Side marker lamps and reflectors ☐ Parking lamps that illuminate with headlamps ☐ Four-way hazard warning flashers ☐ Back-up lamps ☐ Directional signal control with lane change feature ☐ Windshield defroster, washer and multi-speed wipers ☐ Outside left and right rear-view

- mirrors ☐ Brake system with dual master cylinder and warning light ☐ Starter safety switch ☐ Dual action hood latch ☐ Low glare finish on inside windshield moldings, wiper arms and blades, metallic steering wheel surfaces ☐ Illuminated heater and defroster controls ☐ All Wheel anti-lock brake system ☐ Tires with built-in tread wear indicators.

VEHICLE WARRANTY

The GM 3-year/50,000-mile **BUMPER TO BUMPER PLUS WARRANTY** covers repairs for any new GMC Truck model, including labor and parts, to correct any defects in material or workmanship occurring during the warranty period. The complete vehicle (except tires, which are covered by their manufacturer) will be covered for 3 years or 50,000 miles, whichever comes first. After the first year or 12,000 miles, whichever comes first, there is a \$100 deductible per repair visit. Body sheet metal rust-through from corrosion is covered for 6 years or 100,000 miles, whichever comes first. There is no deductible for rust-through repairs. See your GMC Truck dealer for terms of this limited warranty.

IMPORTANT: A WORD ABOUT THIS CATALOG.

We have tried to make this catalog as comprehensive and factual as possible. We reserve the right, however, to make changes at any time, without notice in prices, colors, materials, equipment, specifications, models and availability. Since some information may have been updated since the time of printing, please check with your GMC Truck dealer for complete details.

A WORD ABOUT ENGINES. GMC Truck models are equipped with engines produced by the GM Engine Division, its subsidiaries or suppliers to GM worldwide.

A WORD ABOUT ASSEMBLY OF GMC TRUCK MODELS. GMC Truck models are assembled by different operating units of General Motors, its subsidiaries or suppliers to GM worldwide. GMC Truck models incorporate thousands of components produced by different operating units of GM, its subsidiaries or suppliers to GM worldwide. We sometimes find it necessary to produce GMC Truck models with different or differently sourced components than originally scheduled. All such components have been approved for use in GMC Truck models and will provide the quality performance associated with the GMC Truck name. Since some options may be unavailable when your vehicle is assembled, we suggest you verify that your vehicle includes the equipment you ordered or, if there are changes, that they are acceptable to you.

A WORD ABOUT UPDATED SERVICE INFORMATION. GMC Truck Division regularly sends its dealers useful service bulletins about GMC Truck products. GMC Truck Division monitors product performance in the field. We then prepare bulletins for servicing our products better. Now you can get these bulletins, too. Ask your dealer. To get ordering information, call toll free 1-800-551-4123.

A WORD ABOUT CORROSION PROTECTION.

GMC Truck models are designed and built to resist corrosion. All body sheet metal components are warranted against rust-through corrosion for 6-years/100,000-miles. See your dealer for details of this limited warranty. Application of additional rust-inhibiting materials is not required under the corrosion coverage.

GM®, GMAC®, Vortec®, Insta-Trac® and Delco® are registered trademarks of General Motors Corporation. GMC Truck™, Syclone™ and Commitment Plus/GMC Truck logo™ are trademarks of General Motors Corporation.

GMC TRUCK

